





Summer Term Weekly Bulletin 6th May 2024

Date	Time	Event
Monday 6th		Bank Holiday
Tuesday 7th	9am 12.30-12.55pm 12.30-12.55pm 1.00-2.00pm 1.00-2.00pm 2.00-3.05pm 2.00-2.50pm 2.50-4.00pm	Fitzgeralds Class Photos KS2 Chess Club Y3 & Y4 Pokemon Club Y3 PE: Swimming YR PE: Ball Skills Y4 PE: Swimming Y2 PE: Invasion Games KS1 Invasion Games Club
Wednesday 8th	12.30-12.55pm 1.00-2.50pm 1.00-2.00pm 2.00-3.05pm	KS1 Girls Football Club Y1 PE: Swimming Y4 PE: Tennis Y6 PE: Volleyball
Thursday 9th		Liberation Day Bank Holiday
Friday 10th	1.00-2.00pm 2.00-3.05pm	Y5 PE: Cricket Y6 PE: Cricket



During the Summer months children are encouraged to wear sun hats in the playground. When the UV Index is high, parents are asked to apply sun cream to their child before school. If there are specific times when children will be spending longer outside your class teacher may contact you regarding additional sun protection.

DIARY DATES

SUMMER TERM 2024



Date	Time	Details
Monday 13th May		Y5 & Y6 SHARE Lessons (Letter to follow shortly)
Monday 27th -Friday 31st May		Half Term
Thursday 13th June		 Battle of Britain Air Display
Friday 21st June	5.30-8.00pm	Summer Fayre
Monday 24th - Wednesday 26th June		Y4 Residential - Lihou Island
Wednesday 3rd July	6.30-8.00pm	KS2 Production Evening
Thursday 4th July	6.30-8.00pm	KS2 Production Evening
Monday 8th July-Friday 12th July		Y6 Residential -Camp
Wednesday 17th July	6.30-8.00pm	Year 6 Leavers Evening
Friday 19th July	1pm	End Of Summer Term (No Buses)
Monday 2nd - Wednesday 4th September		Staff Training Days
Thursday 5th September	8.30am	Autumn Term Begins For Pupils
Monday 14th October		Rotary Shoebox Collection (all boxes to be in before half term)
Monday 28th October - Friday 1st November		Half Term
Friday 20th December	1pm	End of Autumn Term (No Buses)

If you have any questions or queries please do not hesitate to contact the school office either by email office@forest.sch.gq or on 226010



20 in two challenge 2024

It's time to get on your bike !

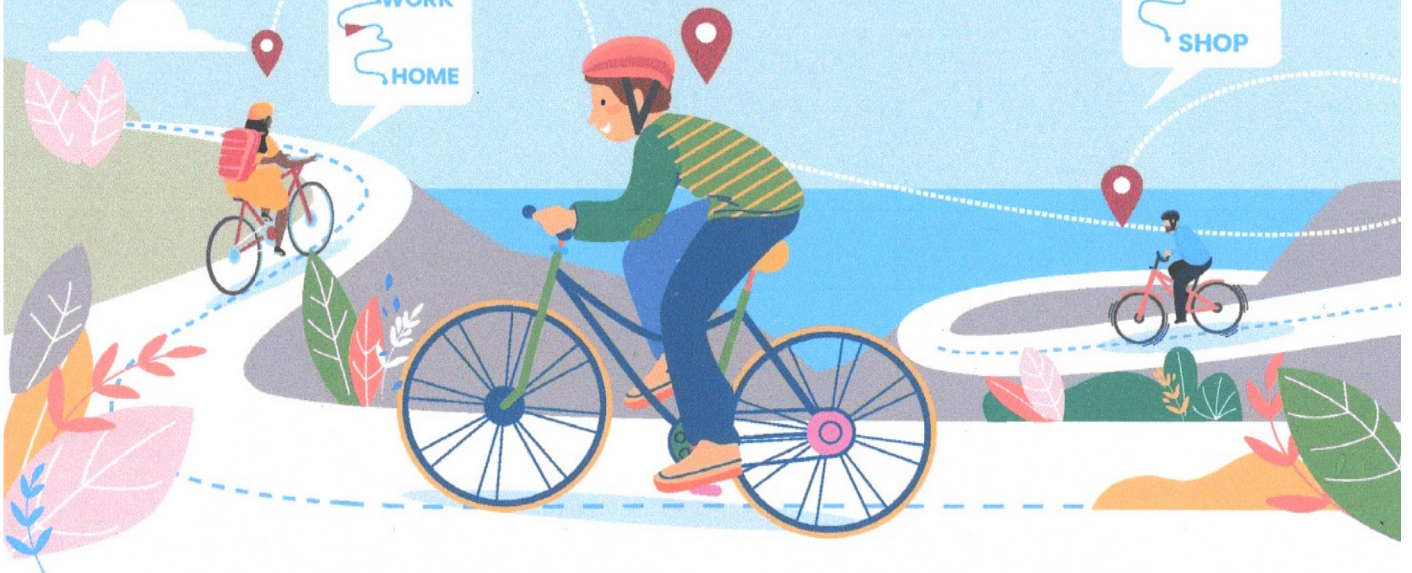
From **1st May – 30th June 2024**, the Guernsey Bicycle Group and Guernsey Chest & Heart LBG have partnered up to challenge islanders to take part in the **20 in Two Challenge**.

Swap your car for your bike 20 times in the two months between 1st May – 30th June and get sponsored to raise money for Guernsey Chest & Heart.

Support a great cause, get outdoors, reduce your carbon footprint and improve your physical and mental wellbeing.



To find out more about how to get involved
please visit: gbg.org.gg



CREATIVE BY



Gigi Chokuri

SPONSORED BY



IN ASSOCIATION WITH



If you have any questions or queries please do not hesitate to contact the school office either by email office@forest.sch.gg or on 226010